



Ford Yacht Club

Race Committee

29500 South Pointe Road

Grosse Ile, MI

2017 FYC Regatta

Skipper's Packet



Attachment A

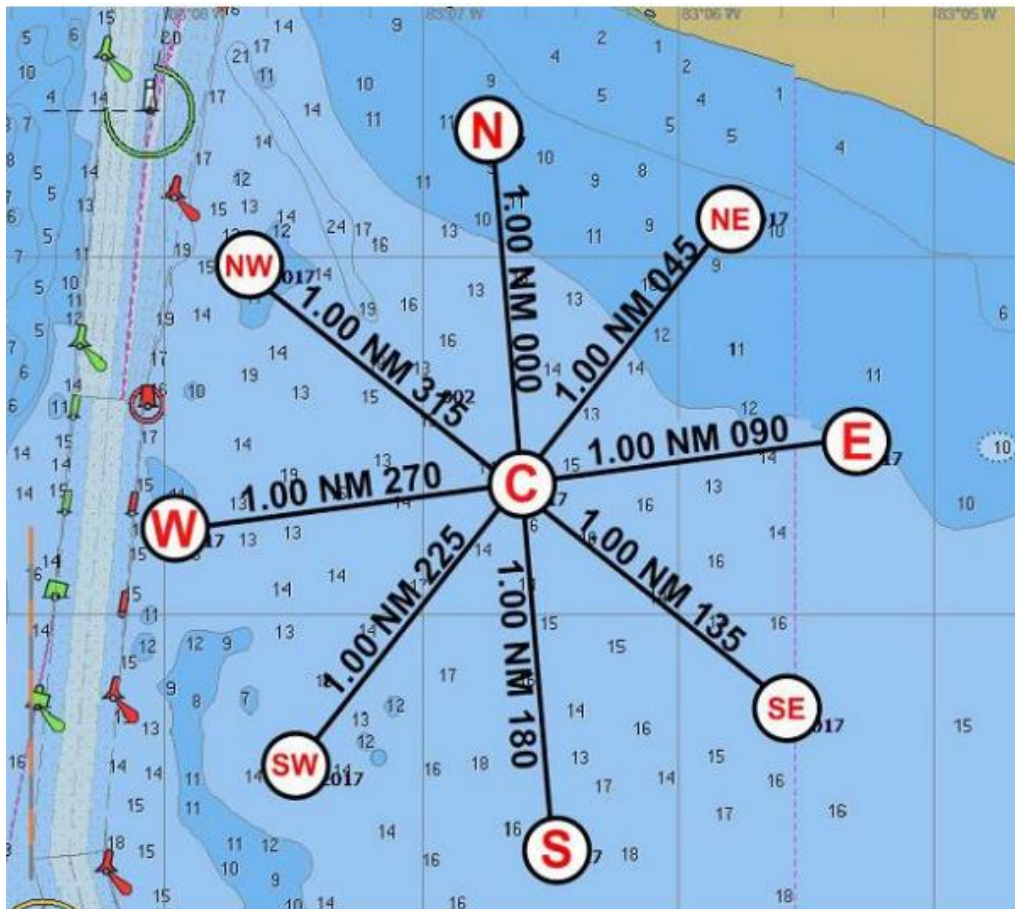
Ford Yacht Club
Race Committee

2017 FYC Regatta Courses

Approximate		R/C Help				to first mark
Wind Direction	Spinnaker	JAM	Distance	Wind Speed		
335-15(353)	C-Np-Wp-Sp-C	C-Np-Sp-C	4.9	0 to 4 (light and variable)	353	
	C-Np-Wp-Sp-Np-C	C-Np-NWp-Ep-Np-C	6.9	5 to 8 (diminishing wind)		
	C-Np-Wp-Sp-Np-Sp-C	C-Np-NWp-SWp-NWp-SWp-Sp-C	9	7 to 14 (steady)		
	C-Np-Wp-Sp-Np-Sp-Np-C	C-Np-Wp-Sep-Nep-Sep-Np-C	11	12+ (steady)		
Wind Direction	Spinnaker	JAM	Distance			
10-30	C-NEp-NWp-SWp-C	C-NEp-SWp-C	4	0 to 4 (light and variable)	38	
	C-NEp-NWp-SWp-NEp-C	C-NEp-Np-SEP-NEp-C	6.00	5 to 8 (diminishing wind)		
	C-NEp-NWp-SWp-NEp-SWp-C	C-Nep-Np-Wp-Np-Wp-SWp-C	7.8	7 to 14 (steady)		
	C-NEp-NWp-SWp-NEp-SWp-NEp-C	C-Nep-NWp-Sp-Ep-Sp-Ep-Nep-C	10.3	12+ (steady)		
Wind Direction	Spinnaker	JAM	Distance			
56-105	C-Ep-Np-Wp-C	C-Ep-Wp-C	4	0 to 4 (light and variable)	84	
	C-Ep-Np-Wp-Ep-C	C-Ep-NEp-Sp-Ep-C	6.00	5 to 8 (diminishing wind)		
	C-Ep-Np-Wp-Ep-Wp-C	C-Ep-NEp-NWp-NEp-NWp-Wp-C	7.8	7 to 14 (steady)		
	C-Ep-Np-Wp-Ep-Wp-Ep-C	C-Ep-Np-SWp-Sp-SWp-Sp-Ep-C	10.3	12+ (steady)		
Wind Direction	Spinnaker	JAM	Distance			
106-145	C-SEP-NEp-NWp-C	C-SEP-NWp-C	4	0 to 4 (light and variable)	129	
	C-SEP-NEp-NWp-SEP-C	C-SEP-Ep-SWp-SEP-C	6.00	5 to 8 (diminishing wind)		
	C-SEP-NEp-NWp-SEP-NWp-C	C-SEP-Ep-Np-Ep-Np-NWp-C	7.8	7 to 14 (steady)		
	C-SEP-NEp-NWp-SEP-NWp-SEP-C	C-SEP-NEp-Wp-SWp-Wp-SWp-SEP-C	10.3	12+ (steady)		
Wind Direction	Spinnaker	JAM	Distance			
156-195	C-Sp-Ep-Np-C	C-Sp-Np-C	4.9	0 to 4 (light and variable)	175	
	C-Sp-Ep-Np-Sp-C	C-Sp-SEP-Wp-Sp-C	6.9	5 to 8 (diminishing wind)		
	C-Sp-Ep-Np-Sp-Np-C	C-Sp-SEP-NEp-SEP-NEp-Np-C	9	7 to 14 (steady)		
	C-Sp-Ep-Np-Sp-Np-Sp-C	C-Sp-Ep-NWp-Wp-NWp-Wp-Sp-C	11	12+ (steady)		
Wind Direction	Spinnaker	JAM	Distance			
196-244	C-SWp-SEP-NEp-C	C-SWp-NEp-C	4	0 to 4 (light and variable)	219	
	C-SWp-Sep-Nep-SWp-C	C-SWp-Sp-NWp-SWp-C	6.00	5 to 8 (diminishing wind)		
	C-SWp-Sep-Nep-SWp-Nep-C	C-SWp-Sp-Ep-Sp-Ep-NEp-C	7.8	7 to 14 (steady)		
	C-SWp-Sep-Nep-SWp-Nep-SWp-C	C-SWp-SEP-Np-NWp-Np-NWp-SWp-C	10.3	12+ (steady)		
Wind Direction	Spinnaker	JAM	Distance			
254-290	C-Wp-Sp-Ep-C	C-Wp-Ep-C	4.9	0 to 4 (light and variable)	263	
	C-Wp-Sp-Ep-Wp-C	C-Wp-SWp-Np-Wp-C	6.9	5 to 8 (diminishing wind)		
	C-Wp-Sp-Ep-Wp-Ep-C	C-Wp-SWp-SEP-SWp-SEP-Ep-C	9	7 to 14 (steady)		
	C-Wp-Sp-Ep-Wp-Ep-Wp-C	C-Wp-Sp-NEp-NWp-NEp-NWp-Wp-C	11	12+ (steady)		
Wind Direction	Spinnaker	JAM	Distance			
291-334	C-NWp-SWp-SEP-C	C-NWp-SEP	4.9	0 to 4 (light and variable)	308	
	C-NWp-SWp-Sep-NWp-C	C-NWp-Wp-NEp-NWp-C	6.9	5 to 8 (diminishing wind)		
	C-NWp-SWp-Sep-NWp-Sep-C	C-NWp-Wp-Sp-Wp-Sp-SEP-C	9	7 to 14 (steady)		
	C-NWp-SWp-Sep-NWp-Sep-NWp-C	C-NWp-SWp-Ep-Np-Ep-Np-NWp-C	11	12+ (steady)		

**2017 West Shore Sail Club
Wednesday Night at the Races
Course Diagram
(Not to be used for navigation)**

C	N42.01.3854	W083.06.6223
E	N42.01.4959	W083.05.3077
NE	N42.02.1653	W083.05.8038
N	N42.02.3802	W083.06.7850
NW	N42.02.0057	W083.07.6806
W	N42.01.2687	W083.07.9782
SW	N42.00.6022	W083.07.4780
S	N42.00.3872	W083.06.4776
SE	N42.00.7527	W083.05.5806







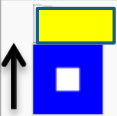





Attachment B

Ford Yacht Club
Race Committee

Starting information

CLASS	CLASS FLAG	Rating
Spinnaker A	Yellow	TBD _____
Spinnaker B	Blue	TBD _____
One Design / Spinnaker C	White	TBD _____
JAM A	Green	TBD _____
JAM B	Pink	TBD _____
Cruising Class	FYC Burgee	ALL

Sample starting sequence per RRS rule 26

Flag signal	Number of sound signals when raised	Number of sound signals when lowered	Description
	1 ↑		Warning Signal. 5 minutes to race start when class flag raised.
	1 P ↑		Preparatory signal. 4 minutes to start when P flag raised. Flag P used or if a starting penalty applies I, Z, Black flag or I over Z is used in place of P.
	1 P ↓	 Long sound	Preparatory signal. P flag removed 1 minute before start. Flag P used or if a starting penalty applies I, Z, Black flag or I over Z is used in place of P.
	1 ↓		Start Signal. Race start when class flag removed.



Individual
Recall
'X'

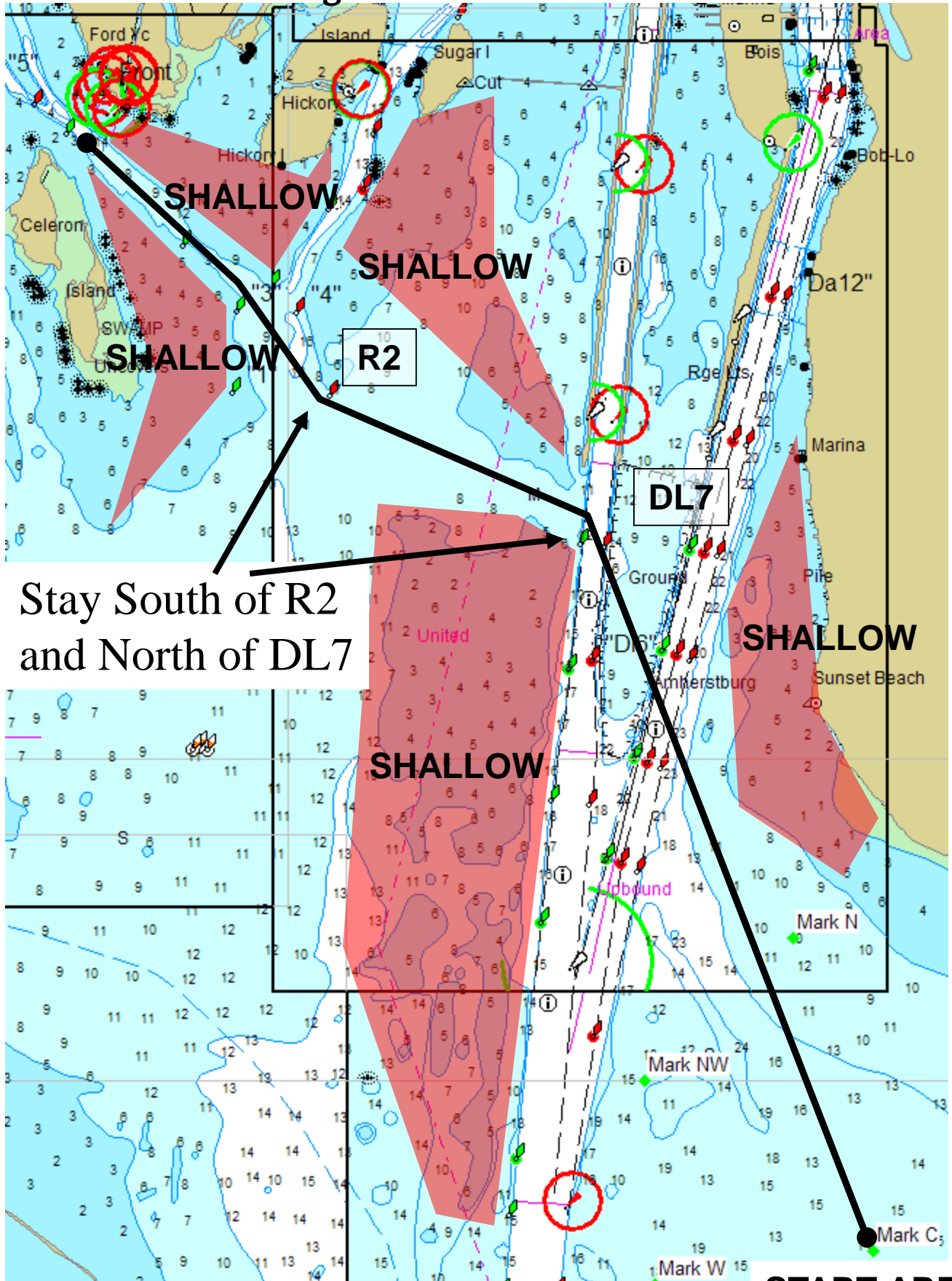
Over Early –
Individual
Recall



General
Recall

Over Early –
General
Recall

Recommendations to get to and from the course



Stay South of R2
and North of DL7

START AREA